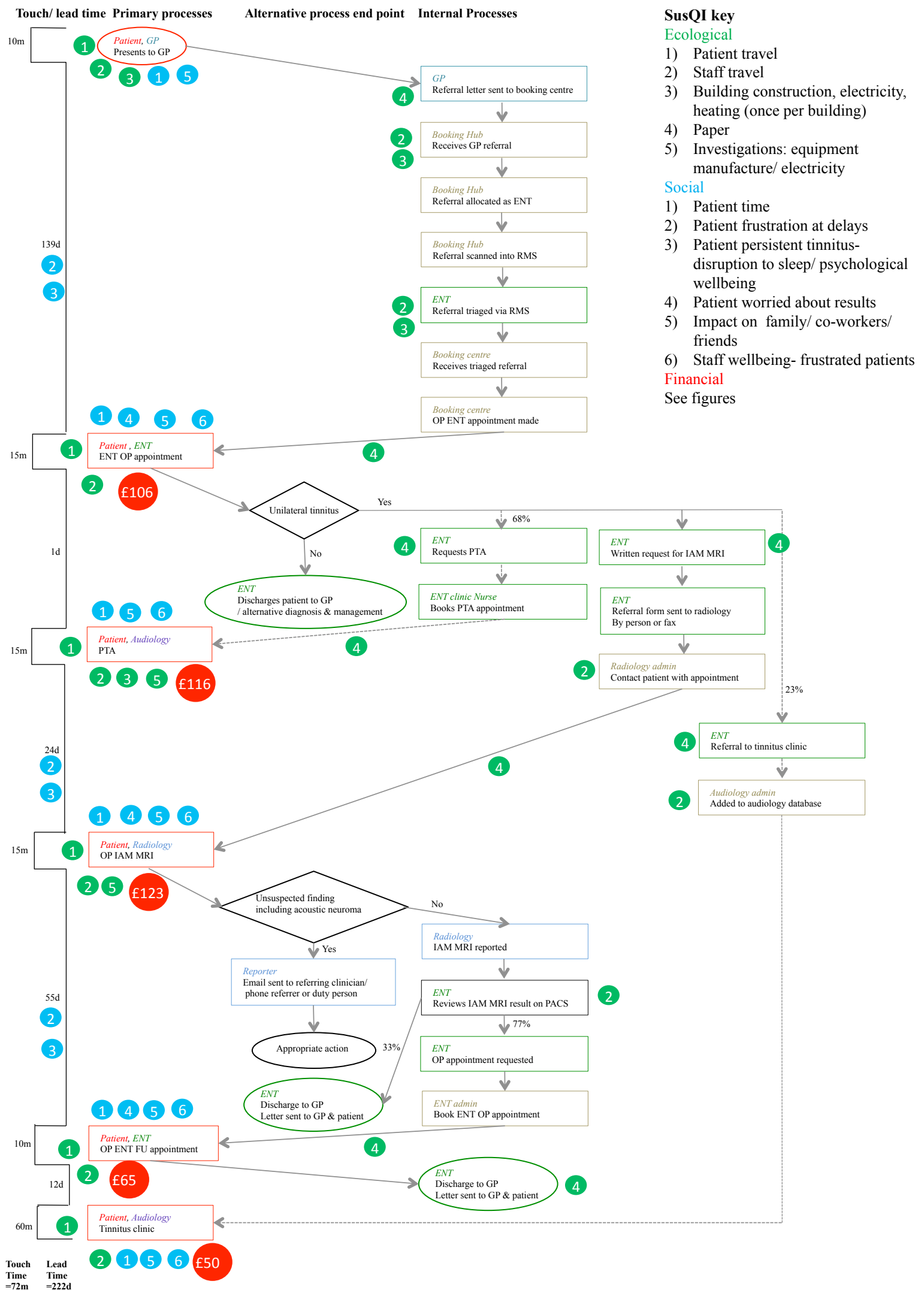


# Unilateral Tinnitus Patient Pathway: Current State Value Process Map



Touch Time = 72m  
Lead Time = 222d

# Unilateral Tinnitus Patient Pathway: Current State Value Process Map



**Touch Time = 72m**  
**Lead Time = 222d**

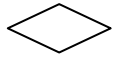
**Key**



Start/ end of process



Process step



Decision point



Flow line



Variation in pathway

Colour code

**Patient**, **GP**, **ENT**, **Audiology**, **Radiology**, **Admin**

*Italics*

indicates individuals involved