



2022-2023

# THE SUSQI ACADEMY

*Your step-by-step guide*



CENTRE for  
SUSTAINABLE  
HEALTHCARE  
inspire • empower • transform



# Table Of Contents

What is the SusQI Academy	<b><u>03</u></b>
Academy Membership Benefits	<b><u>04</u></b>
Academy Enrolment and Course Dates	<b><u>05</u></b>
Other Available CSH Courses	<b><u>06</u></b>
Joining the SusQI Academy	<b><u>07</u></b>
Introducing the SusQI Framework	<b><u>08</u></b>
Benefits of the SusQI Framework	<b><u>09</u></b>
SusQI - Examples in Practice	<b><u>10</u></b>
About the Centre for Sustainable Healthcare	<b><u>13</u></b>

# What is the SusQI Academy?



The SusQI Academy, developed and run by the Centre for Sustainable Healthcare, is a programme of support designed to help both health-education and health-provider institutions, to embed SusQI into their QI teaching and QI practice.

The programme can be tailored to the needs of an institution or an individual, and aims to help you to achieve the following:

- Integrate SusQI into your curricula, teaching programmes, and QI methodology
- Develop SusQI aligned learning objectives, teaching resources, and QI projects
- Develop the confidence of your staff to teach and use the SusQI framework
- Apply SusQI principles to strategy and policy development
- Achieve the criteria for **CSH Beacon Site Accreditation**

## Who Can Apply?

Membership is available to all those working within health professional education, and/or in quality improvement, service transformation and health service delivery.

# Membership Benefits 2022/23



	SusQI course & Teaching SusQI course	Teaching SusQI course & one additional CSH course	Access to members only SusQI resources	10 hrs of CSH expert mentoring shared amongst relevant leads	Access to SusQI forums x4 per year	50% off the Annual SusQI Showcase admission
New SusQI Lead	✓		✓	✓	✓	✓
*Existing SusQI Lead		✓	✓	✓	✓	✓

## Examples of how your 10 Hours Mentoring could be used

*Mentoring time may be shared with QI Leads/Educators across your department*

- Educational and QI content review and advice on how and where to integrate SusQI into existing courses, curricula and QI frameworks
- Co-delivery of on-line SusQI teaching sessions
- Mentoring for SusQI leads
- Support to run SusQI project clinics
- Attendance at senior leadership meetings for strategic input

## More about the SusQI Forums

SusQI forums are events hosted by the SusQI Academy team, where members can join together to share ideas and best practice, and collaborate on projects.

# SusQI Academy

## Enrolment dates

### 2022 - 2023



*Please note: The course dates paired with the induction dates below are suggestions only. Academy members will have a year to enrol in the courses most convenient to them. **SusQI courses run monthly and dates in addition to those below can be found on our [SusQI course page](#).***

#### October 2022

Induction date: Monday 3rd October 2022,  
Live SusQI workshop Thursday 17th November  
Live Teaching SusQI workshop Wednesday 1st March

#### January 2023

Induction date: *Monday 9th Jan 2023, 15:30 - 16:30*  
Live SusQI workshop: *Tuesday 24th Jan 2023, 13:00 - 17:00*  
Live Teaching SusQI workshop: *Wednesday 1st Mar 2023, 15:00 - 17:00*

#### March 2023

Induction date: *Monday 20th March 2023, 15:30-16:30*  
Live SusQI workshop: *Wednesday 19th April 2023, 09:00 - 13:00*  
Live Teaching SusQI workshop: *Thursday 4th May 2023, 15:00 - 17:00*

#### June 2023

Induction date: *Monday 12th June 2023, 15:30 - 16:30*  
Live SusQI workshop: *Wednesday July 5th 2023, 09:00 - 13:00*  
Live Teaching SusQI workshop: *Thursday 19th July, 15:00 - 17:00*



# Available CSH Courses

2022 - 2023



*The SusQI and Teaching SusQI courses are highly recommended for Academy members. If you have already attended these courses or are confident in practicing and/or teaching the SusQI Framework, you may book on one of the many other courses offered by CSH as part of your Academy Membership:*

## Other available CSH Courses [click here for more information](#)

Or visit our website: [sustainablehealthcare.org.uk](https://sustainablehealthcare.org.uk)



Introduction to Sustainable Healthcare



Sustainable Dentistry



Sustainable Mental Healthcare



Public Health Leadership for Sustainability



Sustainable Primary Care



Sustainable Anaesthetics



Sustainable Respiratory Care



Green Space and Health



Sustainable Kidney Care



Board-level Net Zero Leadership Training



Carbon Footprinting for Healthcare

# Joining the CSH SusQI Academy



## Membership fees for 2022/23

- 1 SusQI Lead: £1950 + VAT
- 2 SusQI Leads: £3200 + VAT
- 3 SusQI Leads: £4450 + VAT
- 4 SusQI Leads: £5500 + VAT (discounted rate)
- 5 SusQI Leads: £6500 + VAT (discounted rate)

### Potential Sources of Funding

- Hospital Charity
- Local Academic Health Science Network (AHSN)
- Your organisation's Quality Improvement team
- Your organisation's Estates team (clinical sustainability is a section in the Green Plan).
- Your organisation's Education department
- Health Education England, Health Education in Wales or NHS Education in Scotland
- Royal Colleges

**[Click here to join the SusQI Academy](#)**

**[Or request further information here](#)**

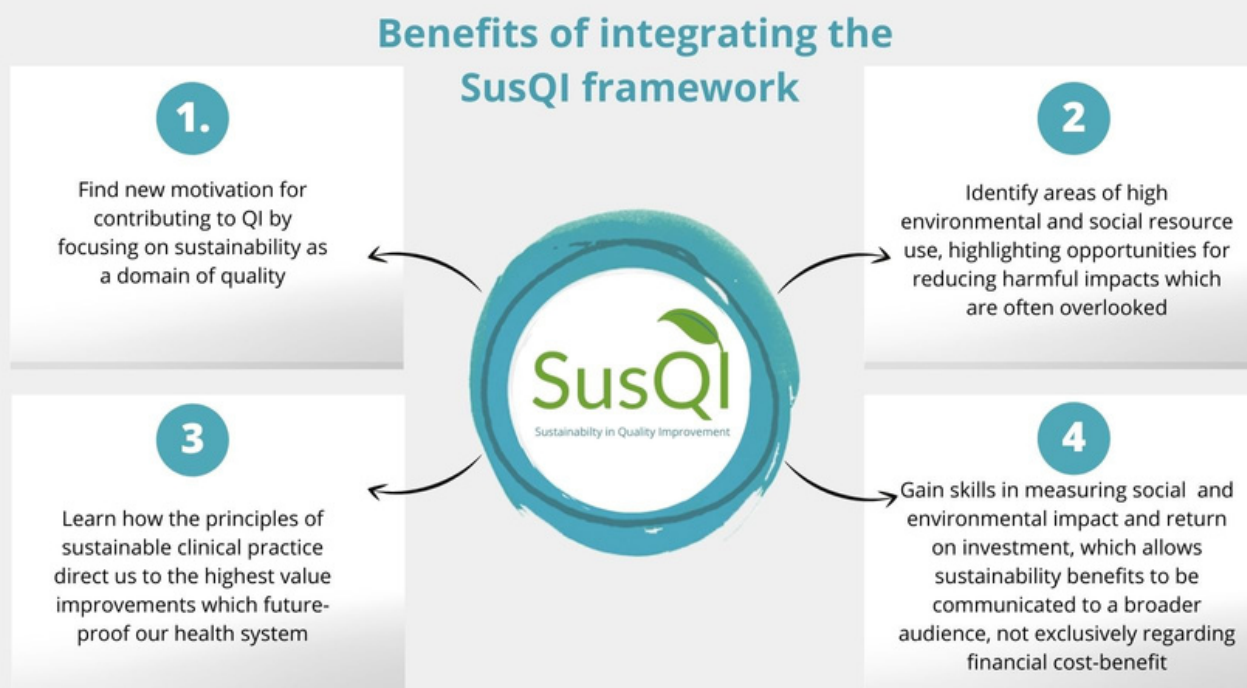
# Introducing the SusQI Framework

Sustainable Quality Improvement (SusQI) recognises that there are finite environmental, social and financial resources available to deliver quality patient care.

The overall goal of SusQI is to maximise sustainable value. This means delivering the best possible health outcomes while minimising financial and environmental costs, and adding positive social value at every opportunity.

As in standard cost-benefit analysis, the concept can be expressed as an equation - see below.

$$\text{SUSTAINABLE VALUE} = \frac{\text{OUTCOME FOR PATIENTS AND POPULATIONS}}{\text{ENVIRONMENTAL + SOCIAL + FINANCIAL IMPACTS (THE 'TRIPLE BOTTOM LINE')}}$$





# Benefits of integrating the SusQI Framework

**“This framework has radically altered how I approach quality improvement, in how I deliver quality improvement to the students I teach, in my own practice and in how I appraise the work of others”**

*- Noreen Ryan, Domain Lead for Quality Healthcare, Imperial College London School of Medicine*

**“Made me more passionate to make a change”**

*- Student at KCL Florence Nightingale Faculty of Nursing, Midwifery & Palliative care, 2021-2022*

**"SusQI projects are a great way of team building and putting a spring in the step of the people we work with and give treatment to."**

*- Mark Wright, Consultant Nephrologist and Haemodialysis Lead at Leeds Teaching Hospitals NHS Trust, July 2022*

**"SusQI has a transformative impact that guides daily professional practice beyond learning about QI through the development of a sustainability 'lens'"**

**"SusQI engages and motivates learners to contribute to the creation of a sustainable healthcare system and is time well spent."**

*i] Spooner, R., Stanford, V., Parslow-Williams, S., Mortimer, F., Leedham-Green, K. "Concrete ways we can make a difference": A multi-centre, multi-professional evaluation of sustainability in quality improvement education, Medical Teacher (2022)*

# SusQI in practice

## Example 1



### Early Mobilisation in Cardiac Intensive Care

This pioneering project in a Southampton Cardiac Intensive Care Unit (CICU) aimed to improve both patient and service outcomes



Reduced ventilation days by 4 days  
Reduced overall cardiac intensive care stay by 6 days



Total savings of £1,266,327 over 2 years



Total savings of 48.5 tonnes CO2e over 2 years



More rapid recovery, quicker discharge and return to ADLs  
Patients having more autonomy during their hospital stay  
Increased staff satisfaction

# SusQI in practice

## Example 2



### Reducing duplicate medication ordering

This project in Southampton aimed to reduce the amount of wasted and disposed medication



Reduce potential drug errors



Annual savings of £26,000



Annual savings of 11,180 kg CO<sub>2</sub>e

↓ Waiting time for patients receiving medications



↑ Staff time

# SusQI in practice

## Example 3



### Reducing unnecessary cannulation in ED

This project focused on reducing unnecessary cannulation in the emergency department, and won the Royal Devon and Exeter 2018 Green Ward Competition.



Reduced infection risk  
Less inappropriate IV fluid use



Annual savings £27,831



Annual savings 8,403 kg CO<sub>2</sub>e



Patients ↑mobility/independence, ↓pain  
Staff ↑time, improved work flow

# About the Centre for Sustainable Healthcare

INSPIRE EMPOWER TRANSFORM

The Centre for Sustainable Healthcare supports the healthcare sector to lead and model climate action. This includes rapid decarbonisation of the health system and development of climate resilient health services with improved connections to green space.

We are well known for work on sustainable healthcare in research and practice, and provide strategic input and consultancy to national and local programmes.

Our Sustainable Specialties Programme is designed to mainstream sustainability within clinical areas so that it is integral to the planning of health systems and the practice of healthcare professionals. This is supported by our work in medical education and in carbon modelling of clinical care.

Our greenspace projects, especially the NHS Forest, assist organisations to improve their natural environment and reconnect their staff, patients and the wider community with their local greenspace to benefit their health.

Our work is guided by the principles of sustainable clinical practice:

- ▶ Prevention
- ▶ Patient empowerment and self care
- ▶ Lean systems
- ▶ Low carbon alternatives